

Electrical power stations

diesel



Electrical power stations diesel

- **Power 30 kW and 60 kW is used as an energy source of AC power for lighting and different phase and single phase appliances.**
- **They are transported on two-axle bogie P 38 R in a trailer behind a towing vehicle. The maximum speed for towing a vehicle on the roads is 80 kph.**

Tactical and technical data

Electrical power stations - diesel

Aggregate	30 kW	60 kW
Chassis lenght in mm	3470	3470
Chassis widht in mm	2000	2000
height	2220	2220
Chassis weight with fuel in kgs	3100	3600
Weight of aggregate without chassis in kgs	2000	2500
Engine type	T-924 A-53	T-928 – 62
Capacity in cm ³	5874	11752
Nominal reduced output in kW	44,1	88,2
Fuel consumption in nominal output in l/hour	10,5	20
Fuel tank capacity	170	170
Alternator type	BGC 8104	BGC 9104
Nominal output in kW	37,5	75
Nominal voltage in V	400/231	400/231
Nominal current in Amps	54	108
Frequency in Hz	50	50
Electrical board type	ZR 693	ZR 694
Chassis type	P 38 R	P 38 R
Tyres	9,00 – 16	9,00 – 16

Electrical power stations

30 kW Three phase

- The main part of power 30 kW and 60 kW are: diesel engine and alternator bezkroužkový contactless voltage regulator. Along with electrical switchgear are deposited on a support frame on which are mounted below the fuel tank, battery box and hood, which protects the working parts from the weather.

Operation of power 30 kW and 60 kW can be controlled from one location to the equipment cabinet and motor, which are concentrated all the controls. Power 30 kW and 60 kW are performed in an isolated system, which allows the use of the hazardous voltage dotykový:

- voltage protection guard,
- protection of zeroing,
- protecting the grounding system with isolated neutral point.



Electrical power stations

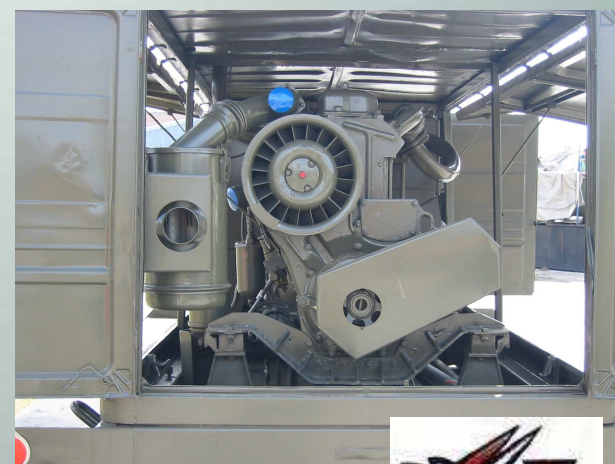
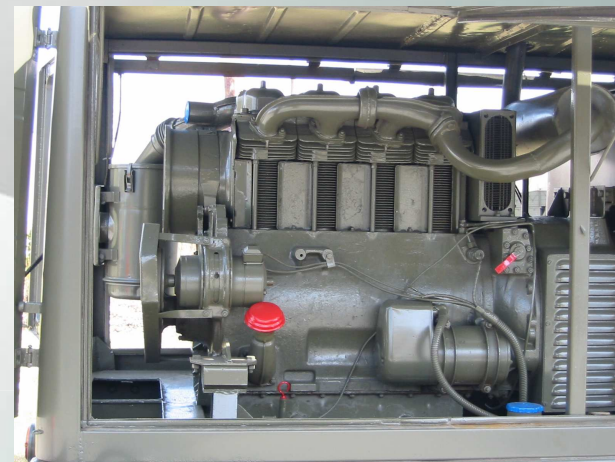
30 kW Three phase



Electrical power stations

30 kW Three phase

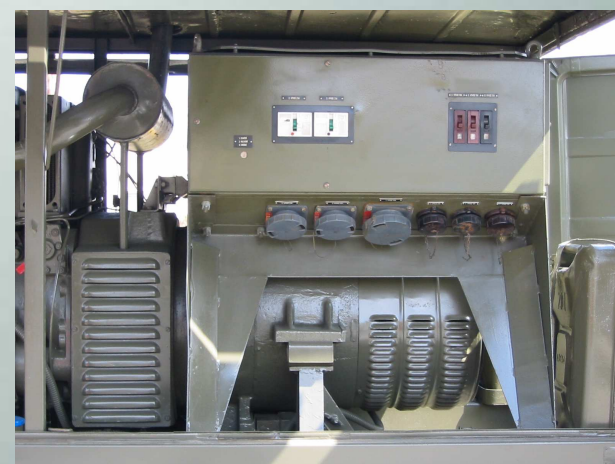
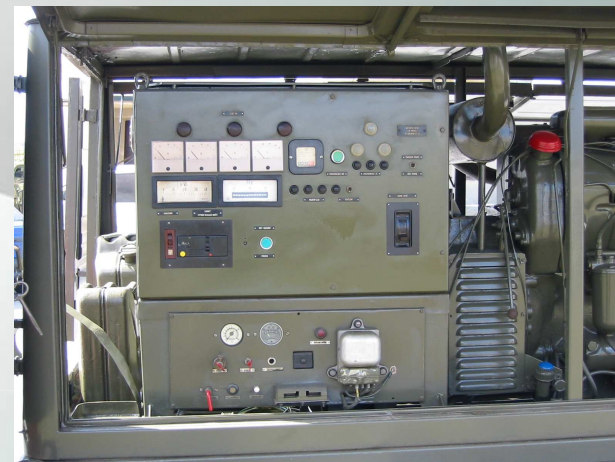
details engine



Electrical power stations

30 kW Three phase

details



Electrical power stations

60 kW Three phase



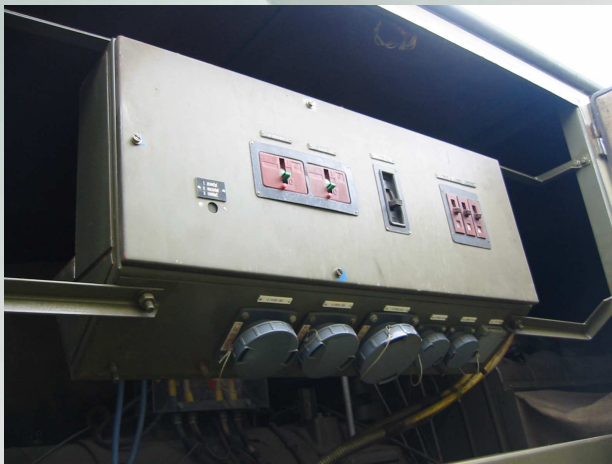
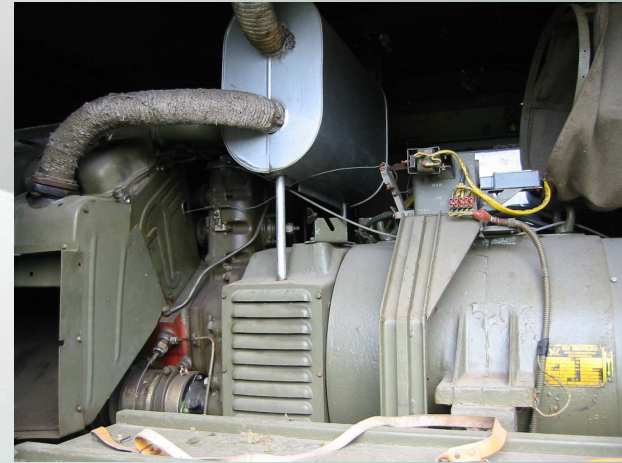
PV3S and Electrical power stations

60 kW Three phase



PV3S and Electrical power stations

60 kW Three phase



Automobile PV3S

- **Automobile P-V3S**
- **the middle three-axle truck off-road truck 6 x 4 x 2 semi lorry chassis.**
- **It is designed to transport material or passengers on roads in difficult terrain.**
- **Automobile has good handling and sufficient tensile strength.**

Tactical - Technical data of cars P-V3S

- **Length 6.910 mm**
Width 2.320 mm
Height over sail 2.750/2.940 mm
Clearance height 400 mm

Curb weight 5.550 kg

Payload

- **5.510 kg on the road**
- **Field 3.510 kg**

Total weight

- **Road to 11.060 kg**
- **Field 9.060 kg**

Trailer Weight

- **5.500 kg on the road**
- **Field 3.100 kg**

The maximum speed of 60 km / h.

Maximum gradient 75%

Ford 0.8 m depth

Fuel consumption 32 l

- **Engine - Type T 912**

-

Type

diesel engine with direct fuel injection

- **Fuel NM – 35**

- **Number and arrangement of cylinders 6 in-line**

- **Bore x stroke 110 / 130**

- **Engine capacity 7.412 cm³**

- **Max. power at 2,100 rpm 1 70 kW**

- **Air cooling**

- **Mechanical gearbox, four**

- **Mechanical gear, sliding sleeves**

- **Brakes Operating air pressure, single-circuit, drum**

-

The parking gear, belt

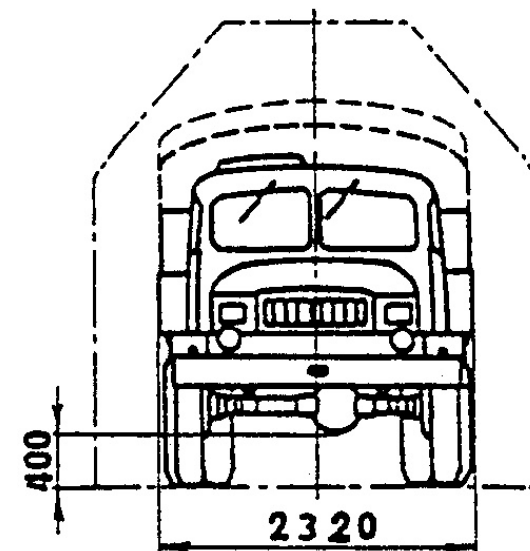
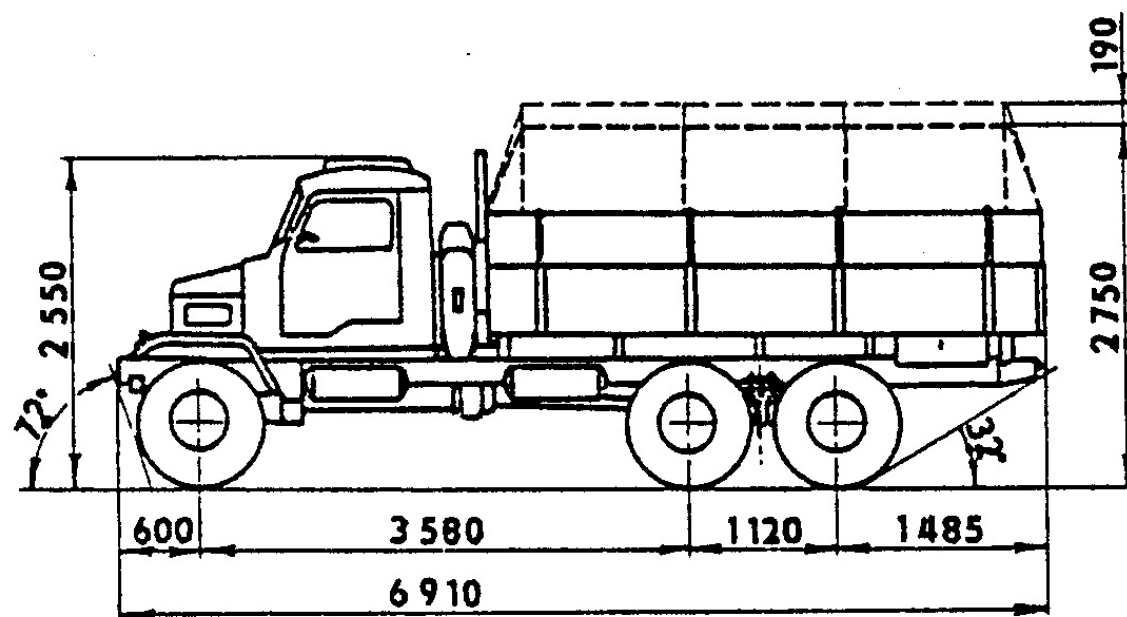
-

Tires 8.25 20 HD 10 PR

- **Fuel tank 120 l NM - 30**



Tactical - Technical data of cars P-V3S



Praga V3S

